

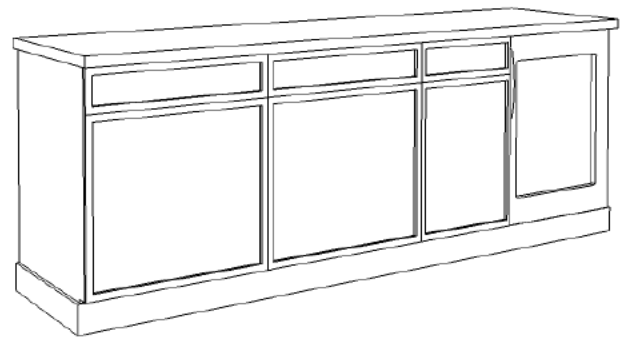
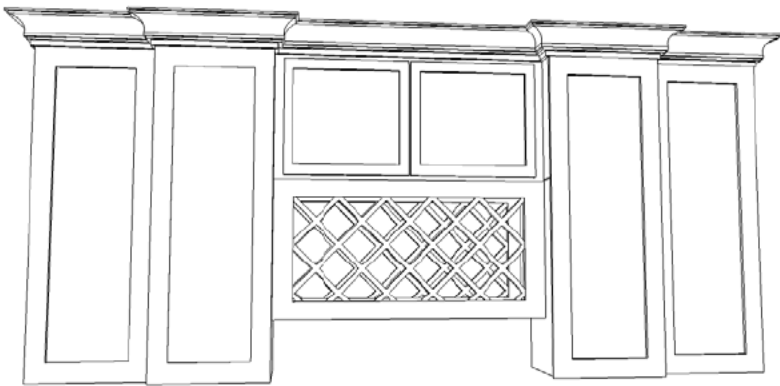
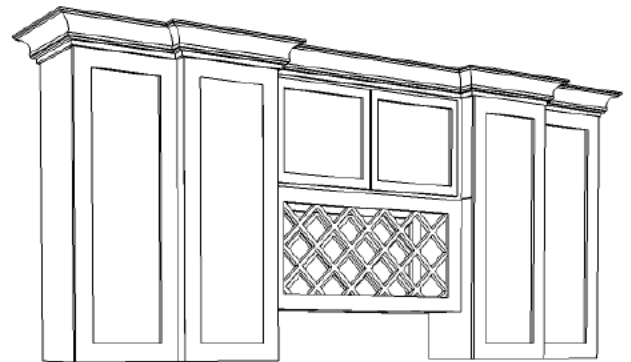


WALL CABINETS STAGGERED DEPTH

This design could be used for any combination, but the reason we liked this look is because most people don't realize how simply modifying the depth of the wall cabinets can create a completely different look. By staggering the depth of the cabinets, it adds shadow lines and makes it look like a custom build project. You can do this with any size wall cabinets, so the cabinet sizes below really are not all that important.

Supplies You Will Need from the RTA Cabinet Store

- ✓ One 30" wide x 12" high wall cabinet
- ✓ One 30" wide by 15" high wine rack
- ✓ Two 18" wide x 42" high wall cabinets
- ✓ Two 15" wide by 42" high wall cabinets
- ✓ Four 42" wall end panels
- ✓ Two 8' pieces of crown molding
- ✓ 2 x 4's from your local supply center
- ✓ (Optional) Two 18" wide x 42" mullion doors



Instructions to Build Staggered Depth Wall Cabinets

Step 1: Take the four wall end panels and secure them to the sides of the 18" wide x 42" wall cabinets.

Step 2: Lay out your measurements on the wall, marking where the two staggered depth cabinets will go. Make sure you leave 30" in the center for the wine rack and upper cabinets.

Step 3: Install the wine rack and 30" wide x 12" high wall cabinets. Secure them to wall and to each other at the face frames.

Step 4: Using the 2 x 4's, create two frames measuring 18" wide, 40" high (so that it is not exposed on the bottom), and 2-4" deep (depending on how far out you want the cabinets to stick out).

Step 5: Secure the two frames to the wall, lining them up against the wall cabinet and wine rack. Once secured to the wall, mount the two 18" x 42" wall cabinets to the framing, lining up the tops of the cabinets. Be sure to secure them to the cabinets next to them for additional support.

Step 6: Install the remaining wall cabinets.

Step 7: Install the crown molding, using mitered cuts to create a professional finish.

Step 8: Install optional mullion doors.

My Design Notes