

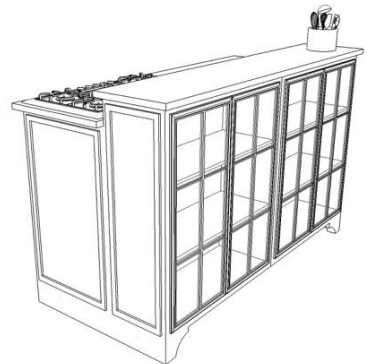
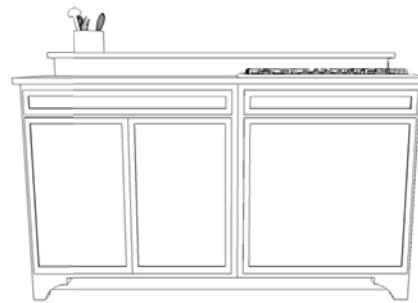
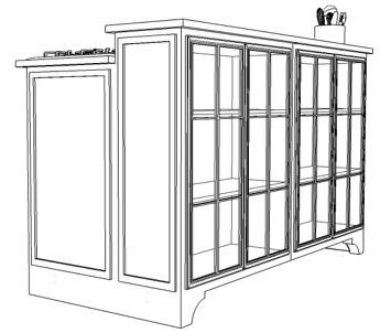
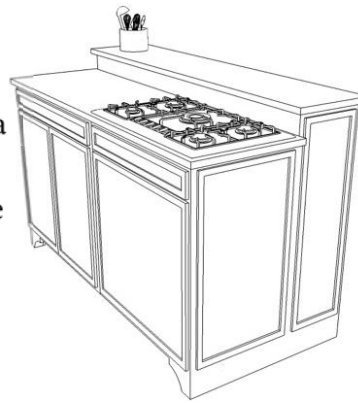


STAGGERED HEIGHT ISLAND

This island design is great for a narrow kitchen that needs additional storage space. While it doesn't allow for extra seating, the wall cabinets on the back of the island give plenty of extra storage. In this design, they utilize the island for a cook top, but you could easily substitute a sink or just take advantage of the extra counter space. It does limit the work space, but frees up room along the wall (especially in a small kitchen), and may help with the coveted "work triangle" which is essential for every kitchen. They also did a nice job in dressing up the bottom of the cabinets with the furniture feet that were added at the corners. For the design below, we didn't put the feet all the way around, but left them on the front and back.

Supplies You Will Need from the RTA Cabinet Store

- ✓ One 30" base cabinet (or 30" three drawer base cabinet)
- ✓ One 30" sink base (if you are installing a cook top or sink)
- ✓ Two 30" wide x 36" high wall cabinets (Note: Not all cabinet lines will have the 36" high wall cabinets. If you are going with a style that doesn't have the 36", you can either use a different style for the island to make it really stand out or you can use the 42" high, but it will be pretty tall.)
- ✓ Three 8' pieces of toe kick
- ✓ Two 30" x 36" mullion doors, or four 15" x 36" mullion doors (Depends on the style of cabinet. Some cabinets have special mullion doors for the 30" cabinets since they don't have a center stile on the cabinet.)
- ✓ Four decorative furniture feet OR cut these out of toe kick
- ✓ One pint of stain for touch up
- ✓ Two 36" decorative wall end panels
- ✓ Two decorative base end panels
- ✓ Three 3x4 island panels
- ✓ Six 8 foot 2x4's from your local home supply center



Instructions to Build a Staggered Height Island

Step 1: Install base cabinets.

Step 2: Using the 2x4's, build a frame to support the wall cabinets. The frame should be 59 ¾" long and 9" wide. Lay the 2x4's flat and build three layers with them. These should be anchored to the floor and installed against the back of the base cabinets, lining up with the edges of the back of the cabinets.

Step 3: Install wall cabinets and anchor them to both the framing and the back of the base cabinets.

Step 4: Take one of the island panels, and cut it into two strips to cover up the back of the wall cabinets that is exposed above the top of the base cabinets.

Step 5: Take the other two island panels, and cut them down to size to fit on the sides of cabinets where the base and wall cabinets connect (to cover up the seam and make it look like one cabinet).

Step 6: Attach the furniture feet, or cut down toe into even sized pieces to be used as feet accents.

Step 7: Install decorative doors on the sides of the island.

Step 8: Install mullion doors.

My Design Notes